

What is LFFA?

The LFFA is a professional association of those responsible for parish faith formation in the Diocese of Portland, including Parish Catechetical Leaders, Youth Ministers and Pastoral Life Coordinators. We gather bi-monthly from September to June to strengthen our faith and relationship with Christ, foster professional development, share best practices and offer mutual support.



How to Join LFFA?

Go to www.portlanddiocese.org and select 'Lifelong Faith Formation', then 'Parish Leadership'. From the drop down menu, select Lifelong Faith Formation Association. Click 'to join' and follow the instructions.

There is a \$35.00* membership fee which supports speaker fees.

Make checks payable to Lifelong Faith Formation Association and write the member's name in the memo line.

Mail checks to:

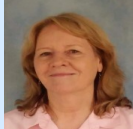
Diocese of Portland--OLFF
Attn: Hannah Gonneville
510 Ocean Ave
Portland, ME 04103

*Scholarships available.

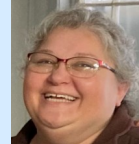
Lifelong Faith Formation Association Officers



Chairman
Carolyn Houston
207-646-5605
Carolyn.Houston@portlanddiocese.org



Treasurer
Joanne Fortier
207-515-0328
Joanne.Fortier@portlanddiocese.org



Vice-Chairman
Melissa Babin
207-728-7531
melissa.babin@portlanddiocese.org



Secretary
Clare Desrosiers
207-532-2871
Clare.Desrosiers@portlanddiocese.org

Schedule of LFFA Meetings—Virtual & In-Person 9-11:30am

Thursday, September 12, 2024

Supporting Family Life: The Family Life Model

Presenter: Georgette Dionne with Group Sharing

In-person locations:

Christian Life Center, Frenchville

Chancery, Portland

Holy Family Church, Lewiston

St. Joseph's Church, Brewer

Thursday, January 9, 2025

Fostering Family Life in Christ

Presenter: Bishop Ruggieri

In-person locations:

Christian Life Center, Frenchville

Chancery, Portland

Holy Family Church, Lewiston

St. Joseph's Church, Brewer

Thursday, November 14, 2024

Models of Family Formation

Office of Lifelong Faith Formation

In-person locations:

Holy Rosary Parish Center, Caribou

Chancery, Portland

Holy Family Church, Lewiston

St. Joseph's Church, Brewer

Thursday, March 13, 2025

Creating Family Events that Rebuild Interest

Group Sharing

In-person locations:

Holy Rosary Parish Center, Caribou

Chancery, Portland

Holy Family Church, Lewiston

St. Joseph's Church, Brewer

Wednesday-Thursday, May 7-8, 2025, Location TBA

LFFA Spring Retreat — Location and Topic TBA

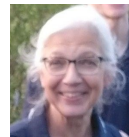
Vicariate Representatives



Melissa Babin
Vicariate I



Julie Sanclemente
Vicariate II



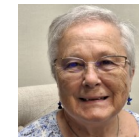
Dawn McKay
Vicariate II



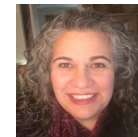
Need Volunteer
Vicariate III



Tyler Nadeau
Vicariate IV



Sr. Jackie Moreau
Vicariate V



Carolyn Houston
Vicariate VI

Why join LFFA?

- Opportunity to gather in a prayerful setting with other catechetical leaders
- Deepen relationship with Christ and respond to the call to live as a disciple
- Support and encourage each other in ministry
- Strengthen understanding of faith and ministry
- Connect with Office of Lifelong Faith Formation
- Network and share ideas with other professionals in similar areas of ministry



“Where parish catechetical leaders can learn, network, share ideas and grow.”

In conjunction with the Roman Catholic Diocese of Portland, we, as catechetical leaders, form the Lifelong Faith Formation Association.

We are fully committed to Jesus and faithful to the teachings of the Catholic Church and the directives of the Bishop of Portland.

We strive to employ the variety of our gifts, services, and ministries for the building of the Kingdom of God by serving those who minister in the parishes of Maine

Diocesan Office of Lifelong Faith Formation

LFFA collaborates with the Office of Lifelong Faith Formation.



Kim Suttie

Director of Lifelong Faith Formation
321-7870
kim.suttie@portlanddiocese.org

Open Position

Children & Adult Ministry Coordinator
321-7884



Shawn Gregory

Coordinator of Youth Ministry
321-7813



Hannah Gonneville

Assistant Coordinator
321-7885

Diocese of Portland

Lifelong Faith Formation Association (LFFA)

2024-2025



Meeting Schedule

- 9:00** Opening Prayer
9:20 Professional Development Presentation
10:20 Break
10:30 Business Meeting
11:30 Adjourn