

## What is LFFA?

The LFFA is a professional association of those responsible for parish faith formation in the Diocese of Portland, including Parish Catechetical Leaders, Youth Ministers and Pastoral Life Coordinators. We gather bi-monthly from September to June to strengthen our faith and relationship with Christ, foster professional development, share best practices and offer support to one another.



## How to Join LFFA?

Go to [www.portlanddiocese.org](http://www.portlanddiocese.org) and select 'Lifelong Faith Formation', then 'Parish Leaders'. From the drop down menu select Lifelong Faith Formation Association. Click 'to join' and follow the instructions.

There is a \$35.00\* membership fee which supports speaker fees.

\*Scholarships available. Please contact the LFFA Treasurer if this fee presents a hardship.

## Lifelong Faith Formation Association Officers

### Chairman

Carolyn Houston  
207-646-5605

[Carolyn.Houston@portlanddiocese.org](mailto:Carolyn.Houston@portlanddiocese.org)

### Treasurer

Joanne Fortier  
207-583-4284

[Joanne.Fortier@portlanddiocese.org](mailto:Joanne.Fortier@portlanddiocese.org)

### Vice-Chairman

Jeanine Wright  
207-255-3731

[Jeaninewright0802@yahoo.com](mailto:Jeaninewright0802@yahoo.com)

### Secretary

Clare Desrosiers  
207-532-2871

[Clare.Desrosiers@portlanddiocese.org](mailto:Clare.Desrosiers@portlanddiocese.org)

## Schedule of LFFA Meetings—Virtual & In-Person 9-11:30am

**Thursday, September 14, 2023**

*Making Adoration Accessible for Families*

In-person locations:

Christian Life Center, Frenchville  
Chancery, Portland  
Prince of Peach Church, Lewiston  
St. Joseph's Church, Brewer

**Thursday, November 9, 2023**

*Post-Sacramental Prep – Fostering Ongoing Family Involvement & Engagement*

In-person locations:

Holy Rosary Parish Center, Caribou  
Chancery, Portland  
Prince of Peach Church, Lewiston  
St. Joseph's Church, Brewer

**Thursday, January 11, 2024**

*Building Youth Ministry*

In-person locations:

Christian Life Center, Frenchville  
Chancery, Portland  
Prince of Peach Church, Lewiston  
St. Joseph's Church, Brewer

**Thursday, March 14, 2024**

*Adult Faith Formation*

In-person locations:

Holy Rosary Parish Center, Caribou  
Chancery, Portland  
Prince of Peach Church, Lewiston  
St. Joseph's Church, Brewer

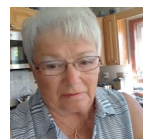
**Tuesday-Thursday, May 7-9, 2024, Location TBA**

*LFFA Spring Retreat — Finding Peace through Prayer*

## Vicariate Representatives



Clare Desrosiers  
Vicariate I



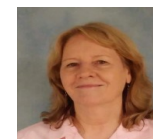
Jeanine Wright  
Vicariate II



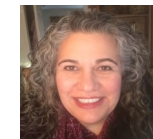
Vicariate III



Tyler Nadeau  
Vicariate IV



Joanne Fortier  
Vicariate V



Carolyn Houston  
Vicariate VI

## Why join LFFA?

- Opportunity to gather in a prayerful setting with other catechetical leaders
- Deepen relationship with Christ and respond to the call to live as a disciple
- Support and encourage each other in ministry
- Strengthen understanding of faith and ministry
- Connect with Office of Lifelong Faith Formation
- Network and share ideas with other professionals in similar areas of ministry



*"Where parish catechetical leaders can learn, network, share ideas and grow."*

In conjunction with the Roman Catholic Diocese of Portland, we, as catechetical leaders, form the Lifelong Faith Formation Association.

We are fully committed to Jesus and faithful to the teachings of the Catholic Church and the directives of the Bishop of Portland.

We strive to employ the variety of our gifts, services, and ministries for the building of the Kingdom of God by serving those who minister in the parishes of Maine

## Diocesan Office of Lifelong Faith Formation

LFFA collaborates with the Office of Lifelong

**Dr. Lori Dahlhoff**

Director of Lifelong Faith Formation

321-7870



**Georgette Dionne**

Children & Adult Ministry Coordinator

321-7884



**Shawn Gregory**

Coordinator of Youth Ministry

321-7813



**Hannah Gonneville**

Assistant Coordinator

321-7885



Diocese of Portland

## Lifelong Faith Formation Association (LFFA)

**2023-2024**



## Meeting Schedule

**9:00** Opening Prayer

**9:20** Professional  
Development  
Presentation

**10:20** Break

**10:30** Business Meeting

**11:30** Adjourn